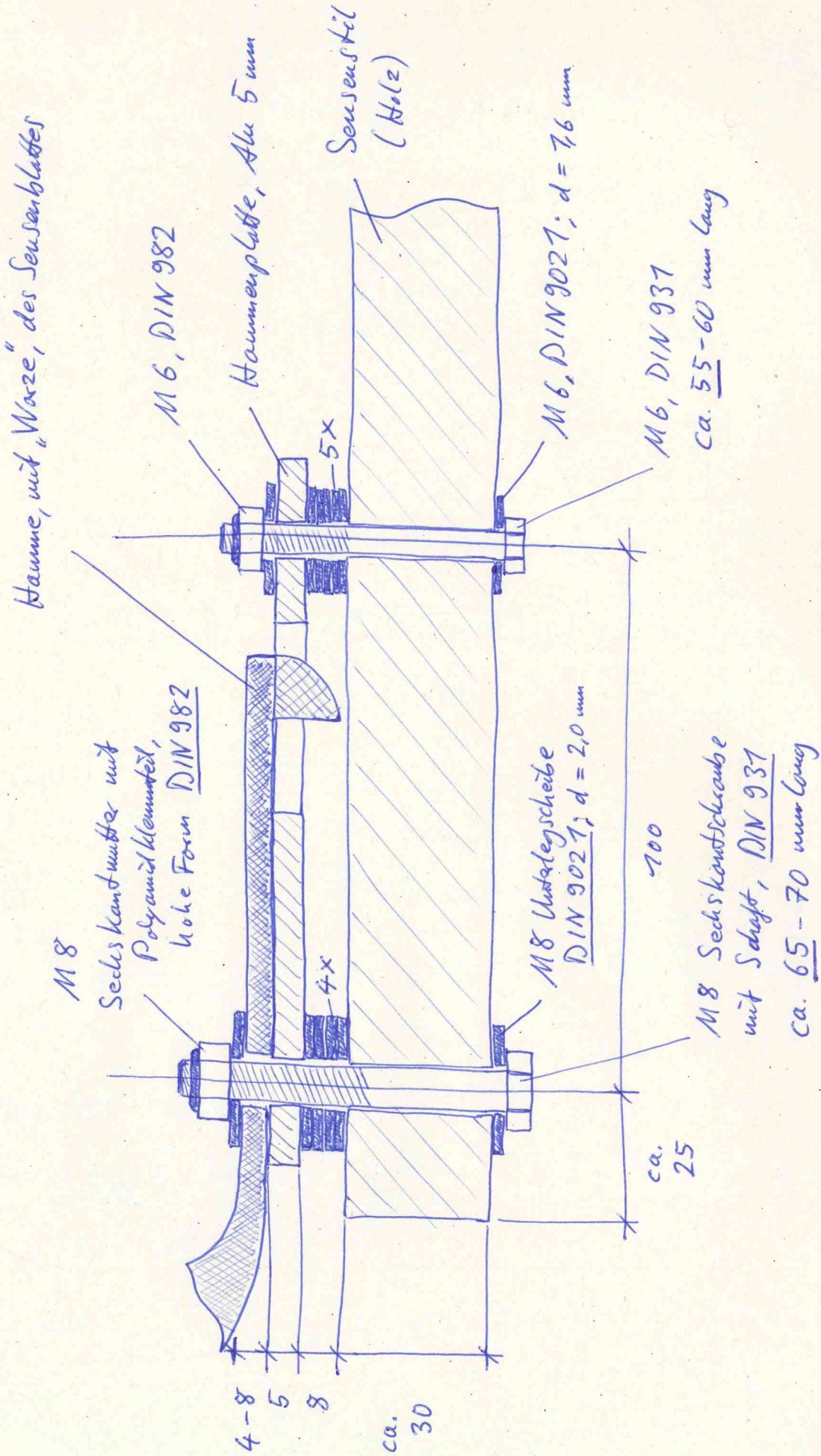




# Verstellbare Hammeraufnahme - Durchsicht

72.12.22

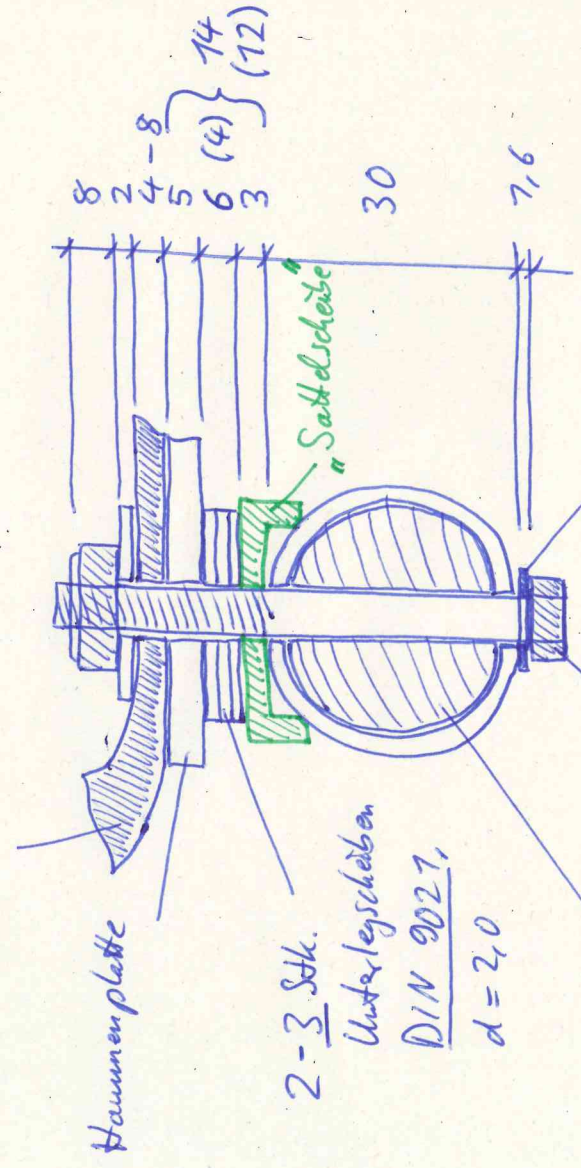


4.7.23

# Sattelscheiben f. 3lar Rundrohr

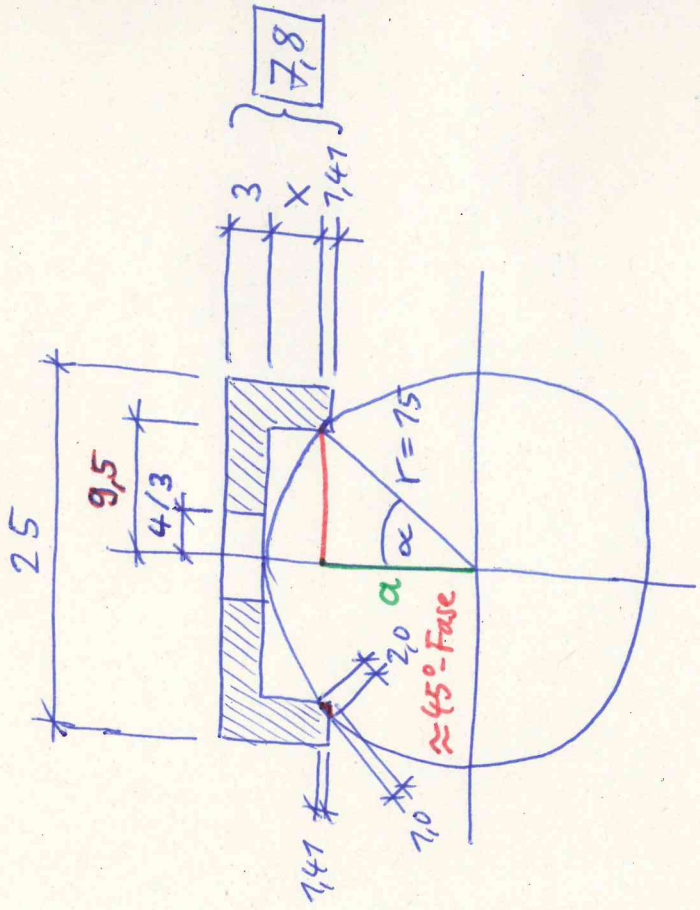
25 x 25 x 3,0 Alu Quaderrohr - aufgesägt + gefast

Sensenblatt/Haume



$$\Sigma 57,6 - 63,6$$

Unterlegscheibe  
DIN 725A



$$\begin{aligned}
 x &= r - a \\
 &= r - \sqrt{r^2 - 9,5^2} \\
 &\approx 75 - 77,67 \\
 x &\approx 3,39 \\
 \alpha &= \arcsin \frac{9,5}{75} \\
 \alpha &\approx 39,3^\circ
 \end{aligned}$$

65 mm lang

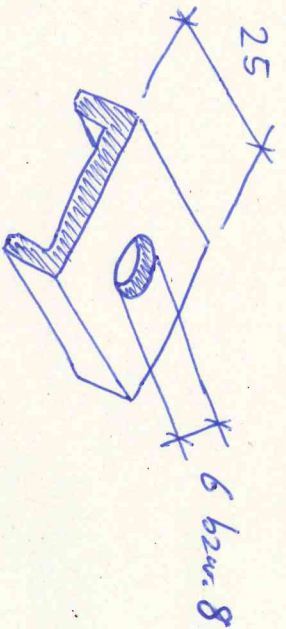
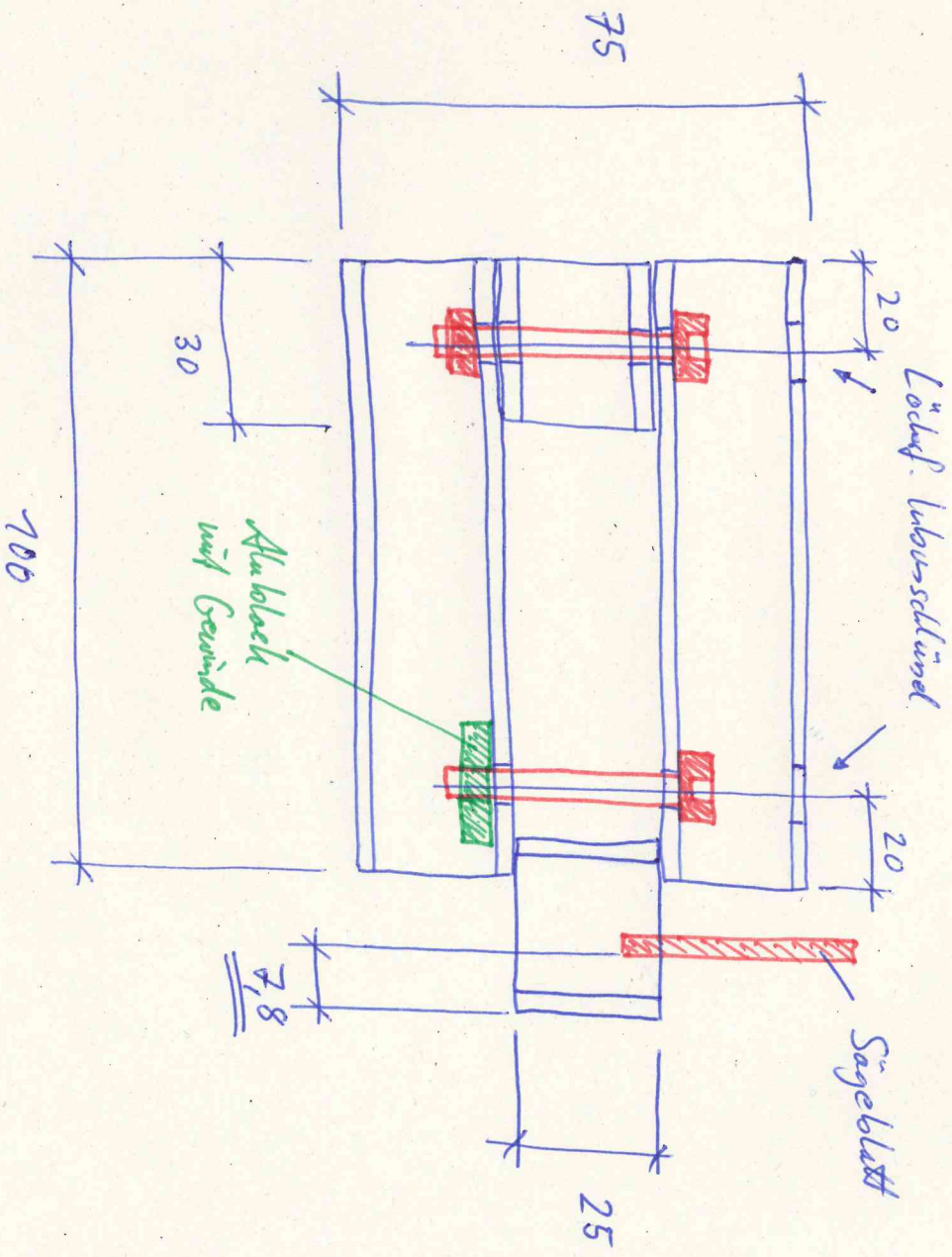
bzw.

M 6 x 55 mm f.

zweite Hammerplattenverschraubung

# Spannhilfe f. Sattelscheiben

25 x 25 x 3,0 für Querschnitt; M 6 x 40/45



4.7.23